

# Quick Start Guide



**VizioGuard** is a remote environmental monitoring system to increase the security of your facilities and reduce unforeseen downtimes of your equipment. Its modular conception allows to monitor many sensors and trigger emergency actions like individual control of power outlets and alert sending via SNMP traps, Email or Syslog messages.

- Before operating this device, please read the safety instructions in the User Guide on the provided CD-ROM.
- Detailed information can be found in the User Guide on the provided CD-ROM.

## 1. Installation

1. Connect the VizioGuard to your Local Area Network.
2. Power-up the VizioGuard using the provided power adapter (you can use either the Power Input A on the front or the Power Input B on the back of the device).
3. Starting needs approximately 30 seconds. During this time, the status LED on the top of the case flashes red/green.



- On the back:
- second power input for redundant power supply
  - screw terminal block for dry contact sensors (door contacts, smoke detectors...)
  - 4 RJ45 connectors for connection of other xBus peripherals

### Advantages

- High secure remote monitoring system (SSL 128-bit, RSA 1024-bit)
- Modular system concept offers flexible expansion possibilities
- Environmental monitoring (temperature, humidity and light sensors)
- Monitoring of up to 260 dry contacts (magnetic door contacts, smoke detectors...)
- Scheduler for triggering of user defined actions (power switching, sending of Emails, Syslog messages and SNMP Traps)
- Individual power control of up to 128 devices
- RTC with NTP synchronization for Emails, Syslog, Log and SNMP Traps
- Redundant power supply
- Built-in Online help

### Supported peripherals and accessories

- 16 peripherals for remote power management (ePowerSwitch 8XS or ePowerSwitch 1XS)
- 16 EnergyMeter for real time power consumption measuring
- 16 IEC current probes
- 32 sensors for the environmental monitoring (temperature, humidity and light)
- 16 Digital Input Modules for dry contacts sensors or 16 push buttons,
- xBus Extenders, xBus Optocouplers,
- 12 VDC power adapter



19" rack mount kit included (RMK-D)



© Copyright 2009  
NEOL SAS  
All rights reserved

# VizioGuard

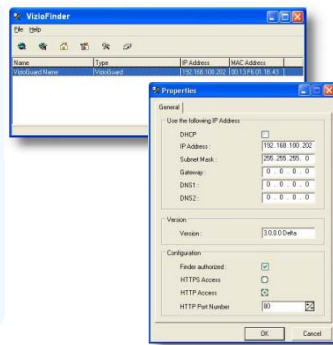
## 2. Configuration

Use one of the three following methods:

### Configuration through the LAN using the Finder program contained on the CD-ROM

It is the simplest and fastest configuration method if you use Windows as operating system and allows to configure your VizioGuard through your local network even if its network parameters are not compatible with those of your PC.

1. Start the Finder.exe program.
2. In the tool bar, click on the first left button to discover the VizioGuard connected on your LAN.
3. In the tool bar, click on the second left button and configure the network parameters.



### Configuration through the LAN using a standard Browser

During the first installation, change temporarily the network settings of your PC according to the default network settings of the VizioGuard.

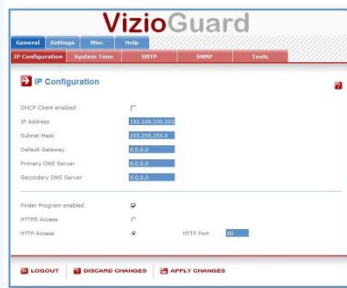
#### Factory network settings of the VizioGuard

IP Address: 192.168.100.202 - Port: 80

Gateway: 255.255.255.0

Default factory protocol is HTTP !!!

1. Start your Web browser and type following IP address: <http://192.168.100.202/sysadmin.htm>
2. Enter the administrator name and password (default for both = admin)  
The home page appears, allowing you to configure the settings of your VizioGuard.



### Configuration through an RS232 Terminal connection

1. Use the provided RS232 cable to connect the VizioGuard to an available serial port of your PC.
2. Run a Terminal program such as Windows HyperTerminal.
3. Configure the appropriate serial port @ 9.600, n, 8, 1 and no flow control.
4. On your computer, press <ENTER> until the menu appears on your screen.
5. Press the "M" on your keyboard and follow the menu to configure the network parameters of your VizioGuard.

#### NETWORK INTERFACE PARAMETERS:

Should this target obtain IP settings from the network?[N]

Static IP address [192.168.1.250]?

Subnet Mask IP address [255.255.255.0]?

Gateway address IP address [192.168.1.2]?

Primary DNS Server address IP address [192.168.1.2]?

Secondary DNS Server address IP address [0.0.0.0]?

MISCELLANEOUS:

Finder program enabled?[Y]

Configuration menu